

Rig Viewer – Deployment Scenarios

October 8, 2013

PetroDAQ



Universal Data Acquisition

Instrumentation

Data Acquisition

Transmission

Monitoring

PetroDAQ Inc

PetroDAQ Inc is a technology provider of hardware and software to the Oil & Gas industry.

We develop and manufacture leading-edge technology products for faster and informed decisions leading to a more efficient drilling operation.

Rig Viewer

Standalone program to display Rig measurements in real-time

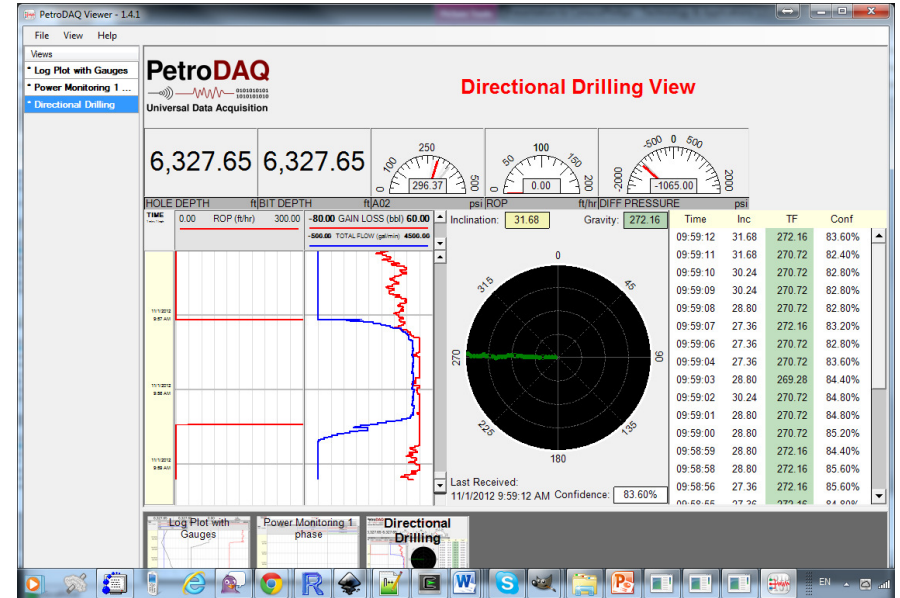
- Digital readouts
- Needle Gauges
- Histograms
- Pen Plotter
- Tank Levels
- Operation Status Strip
- Toolface
- Look and feel is customizable to match corporate identity

Rig Viewer

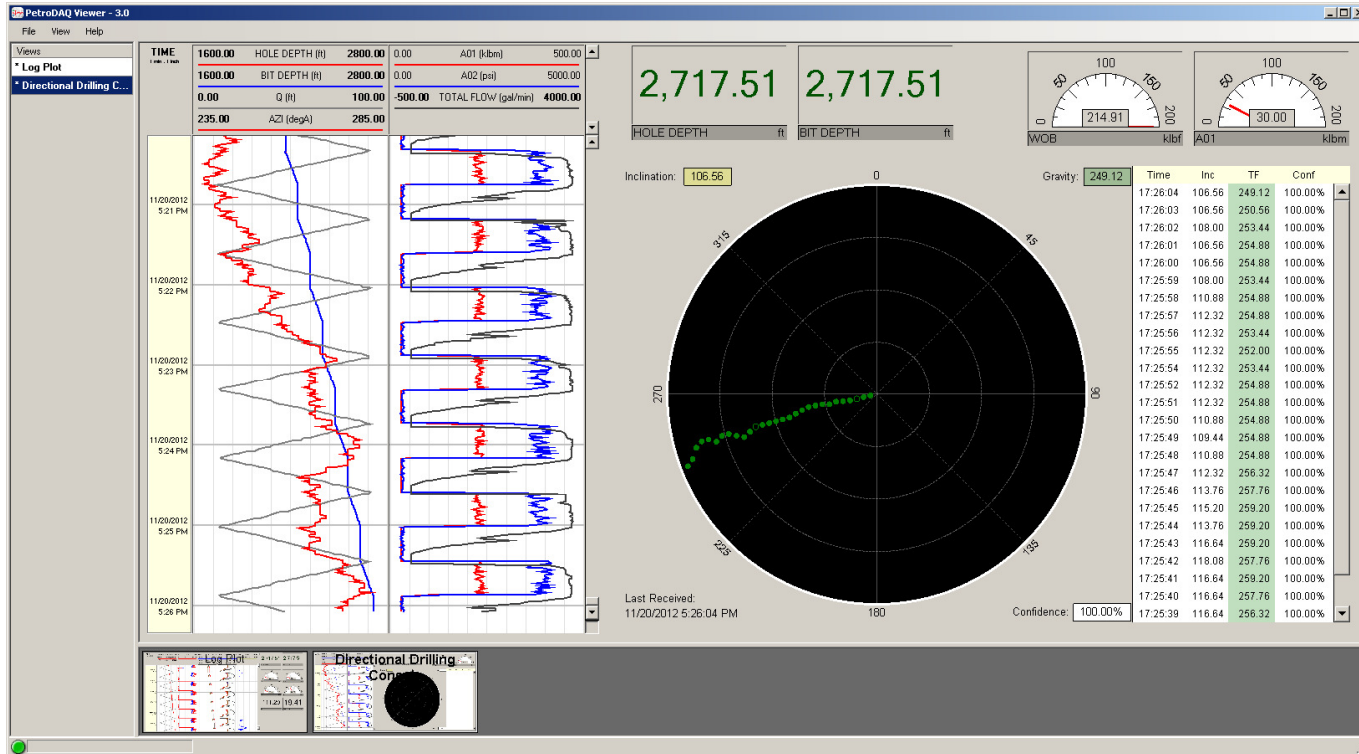
Customizable Views

Controls for Geology,
MWD, PVT, and Equipment
Monitoring

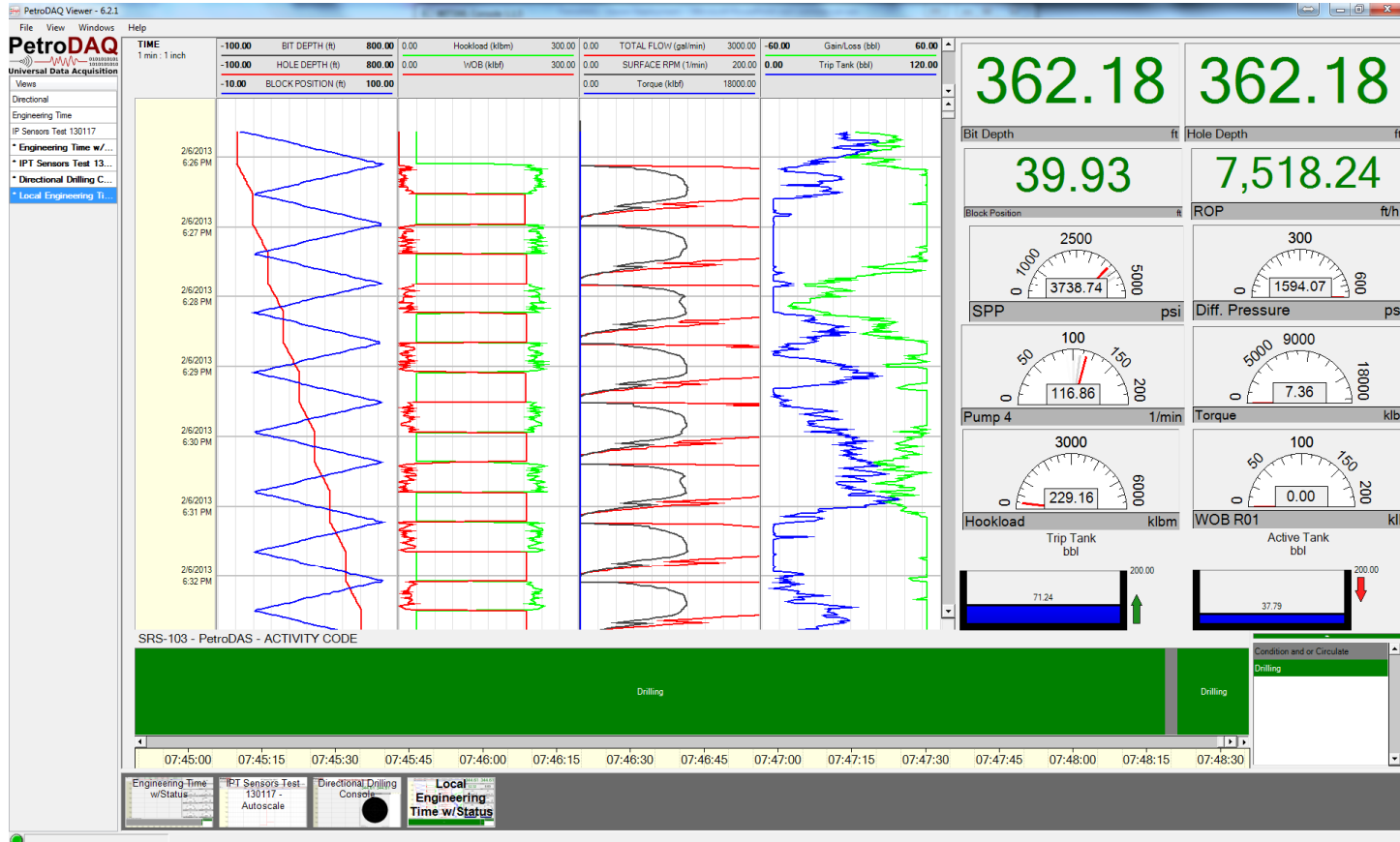
Supports fast data rates



Sample Configuration – Directional Drilling Console



Sample Configuration – Drilling Mechanics



Sample Configuration – Drilling Control

The screenshot displays the PetroDAQ Viewer - 3.1 software interface. The window title is "PetroDAQ Viewer - 3.1". The menu bar includes "File", "View", and "Help". The left sidebar shows "Views" with "Time Log Plot" and "Drilling Control" (selected). The main area is titled "PetroDAQ Universal Data Acquisition" and "Drilling Control".

Depth Control

Hole Depth	13136.74	Set
Bit Depth	13136.74	Set

Pumps

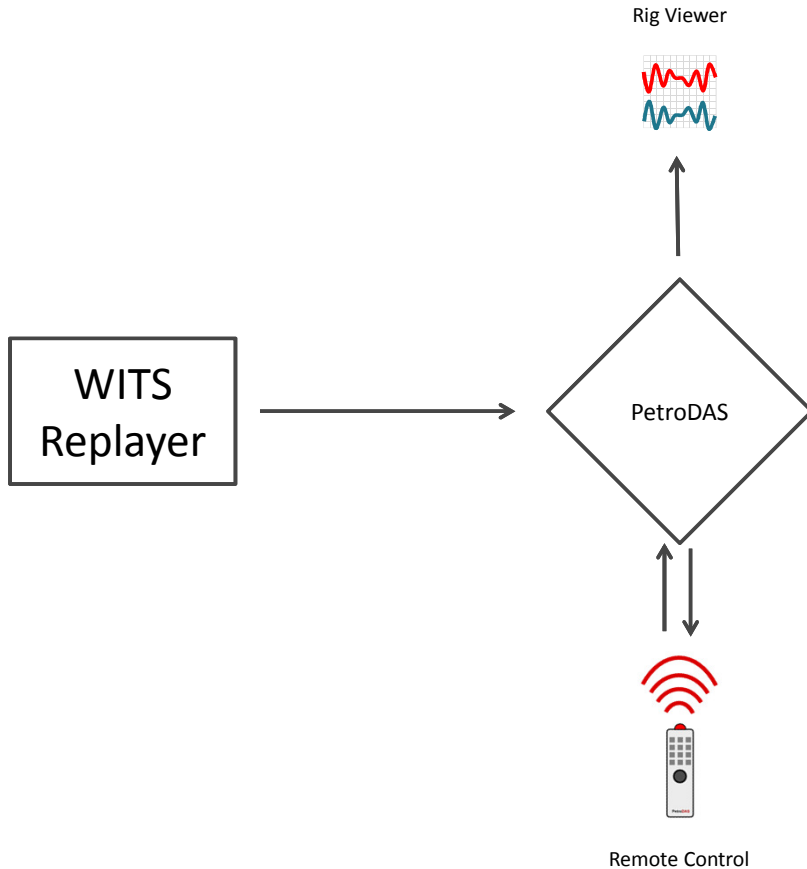
<input checked="" type="checkbox"/> Pump 1	20.00	Set
<input checked="" type="checkbox"/> Pump 2	20.00	Set
<input checked="" type="checkbox"/> Pump 3	20.00	Set
<input checked="" type="checkbox"/> Pump 4	--	Set

Drilling Control

Zero Weight-on-Bit	19.45	Zero
Zero Bit Revolutions	3748763.33	Zero
Zero Gain/Loss	0.00	Zero
Circulation Threshold	500.00	123 Set
Slips Threshold	45.00	Set
<input checked="" type="checkbox"/> Downhole Motor	0.04	Set

At the bottom, there are two small preview windows: "Time Log Plot" and "Drilling Control".

Rig Deployment – Minimal Test Setup



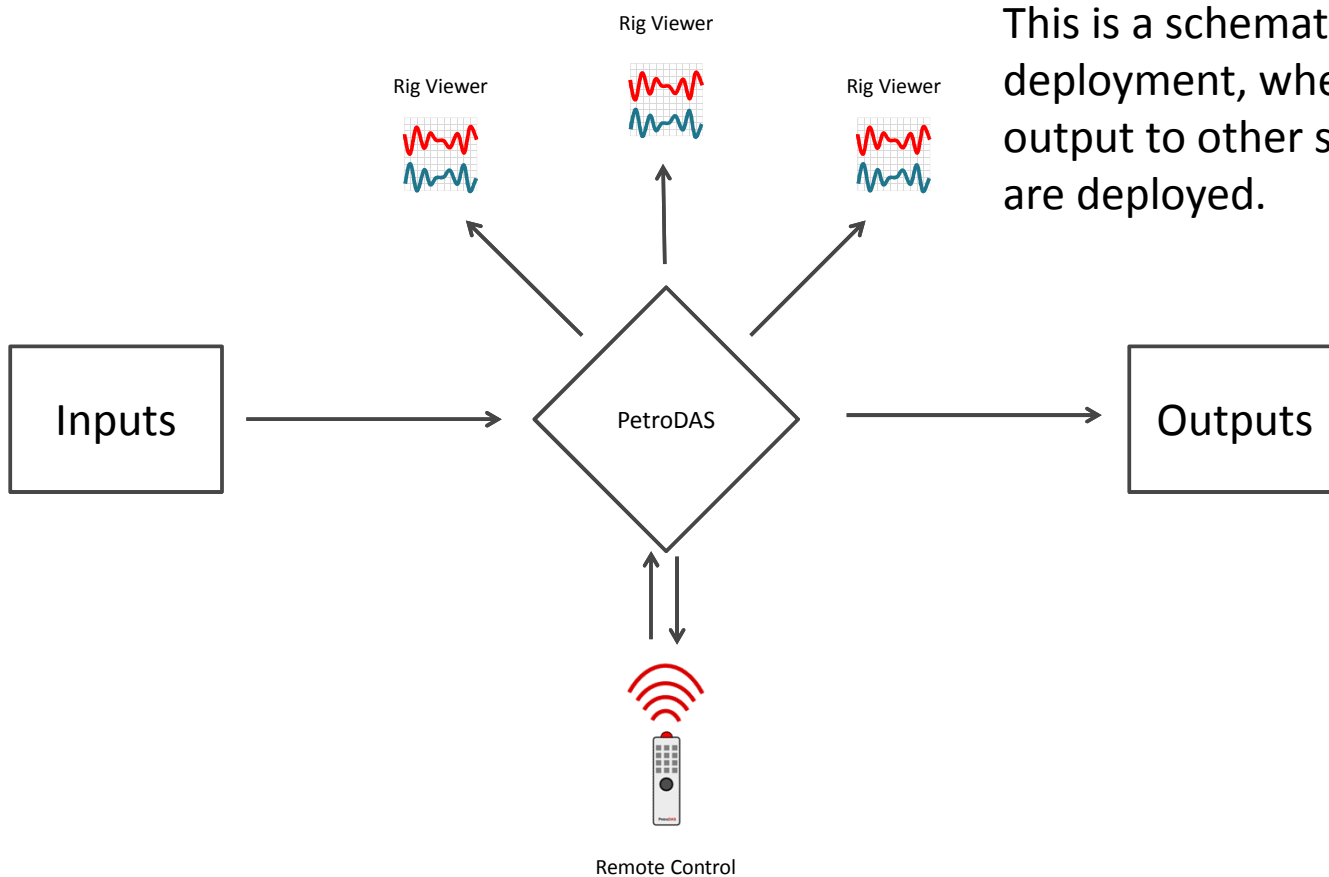
This minimal test setup allows the user to evaluate the functionality of Rig Viewer with a real-time data stream.

No output to another system is required.

Components:

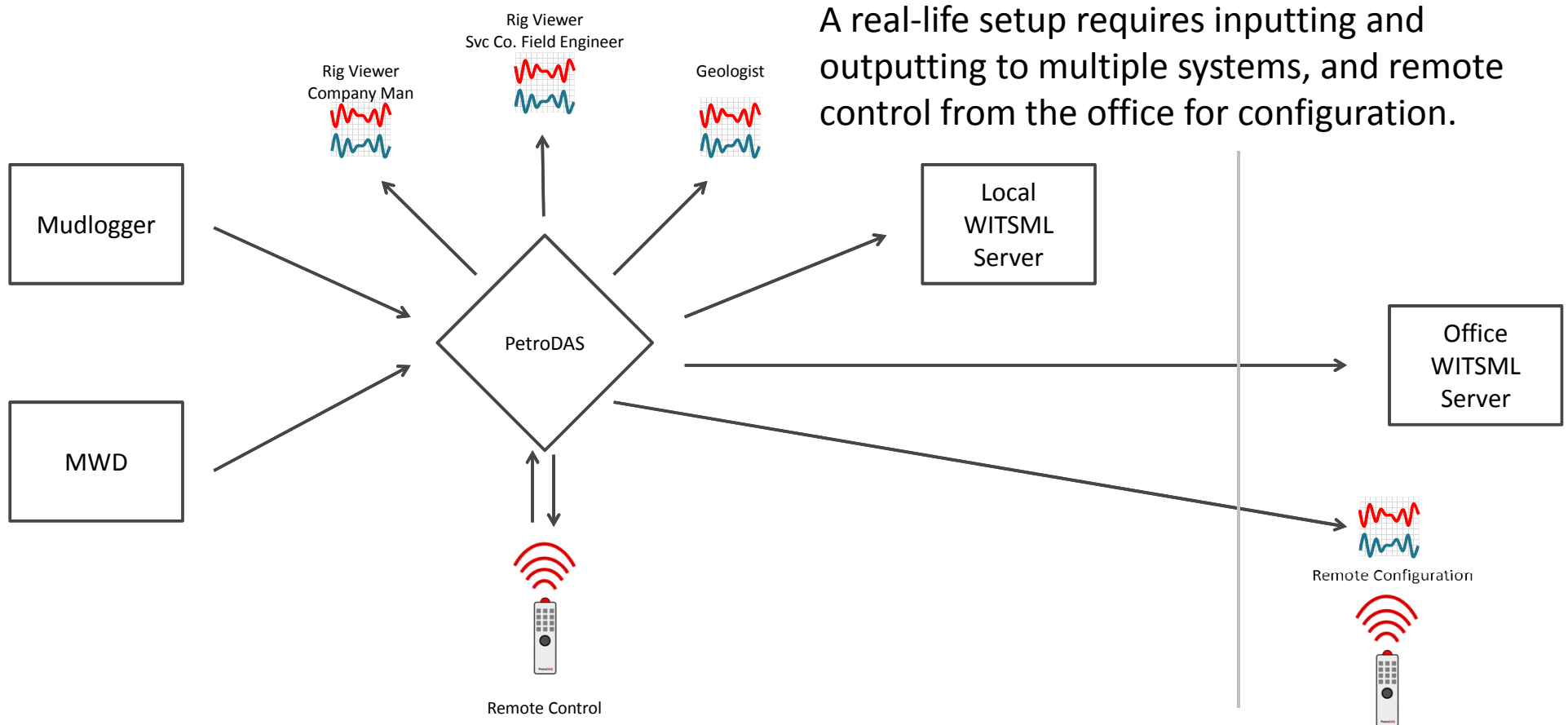
- WITS Replayer
- Rig Viewer
- PetroDAS
- PetroDAS Remote Control

Rig Deployment – Typical Rig Setup



This is a schematic of the typical rig deployment, where inputs are processed and output to other systems, and multiple viewers are deployed.

Rig Deployment – Typical Rig/Office Setup



For more information

PetroDAQ Inc

2121 Golden Rd, Suite 1-A
The Woodlands, TX 77380

sales@petrodaq.com

+1 (281) 826-1825

www.petrodaq.com